



FORESTRY PRODUCTS



THE STEPA ADVANTAGE

STEINDL-PALFINGER

PRODUCT NAME:

F L 62 85

- Range [dm]
- Lifting moment [kNm]
- L - crane (long boom crane)
Z - crane (foldable crane)
- F - forestry crane
for crane use on a forestry trailer
T - tractor crane
for maximum mobility through being mounted on a tractor

C 12 AK

- A - pull-out frame
K - slewing drawbar
V - adjustable axle
- permissible gross weight [t]
- Forestry trailer series
B Series: small and inexpensive - 8 & 9 t
C Series: compact and strong - 10 & 12 t
M Series: The all-rounder - 14 & 16 t

Double telescope system
for high telescope speeds
fitted as standard

internal hose run all the way to the top of the grab

STEINDL-PALFINGER has for decades been developing cranes with excellent technical characteristics.
Manoeuvrability - Lifting power - Reliability

KTL priming and powder-coating for the toughest of jobs and long-lasting colour

HEXAGONAL section frame with end-to-end base frame for greater torsion resistance and maximum stability

CE-compliant safety features with fully-fledged EMERGENCY STOP button

Standing platform with safe access and ergonomic specification

Patented drawbar with internal cast-iron pump, drive shaft and hose guide

Slew mechanism and crane column from PALFINGER-EPSILON for long life and great reliability

Large cargo bed with side stakes
optimised stake layout up to 5 stake pair brackets – 3 lashing points as standard for securing the load

The **semi-closed front grille** protects the components and hoses behind it

PALFINGER-EPSILON universal joint for maximum protection and minimum wear

Strong **4.5-tonne rotator** as standard

Heavy-duty timber grab with great closing force and high-quality construction and geometry

Rolled stakes
Not bent!

Pull-out frame
incl. LED lights

Available with **tyres** 400-600mm wide and with forestry wheel rims

No exposed hoses from the front grille to the axles everything is laid in protected fashion.

Flap-down stabilisation
Great stability, large contact area and protected cylinders inclusive of safety non-return valve

Central support leg with 2 speeds as standard

FORESTRY TRAILERS

B SERIES 8 & 9 TONNES

A particularly striking feature is the new hexagonal base frame section, which is used from the slewing drawbar all the way to the rear end.

It is neither a classical mono frame nor a double-frame construction. The large hexagonal section shape is broader and thus more than twice as resistant to distortion as all other frame shapes to date.

The crane superstructure can also be mounted directly onto the base frame without any elaborate reinforcing plates. STEPA is thus setting new standards, including in the case of the small trailers.

The smaller B 8K is equipped as standard for a maximum of three stake pairs and with a +/-40° slewing drawbar. Its big brother, the B 9AK, provides the possibility of using ten stakes and also has a 500mm-long pull-out extension.

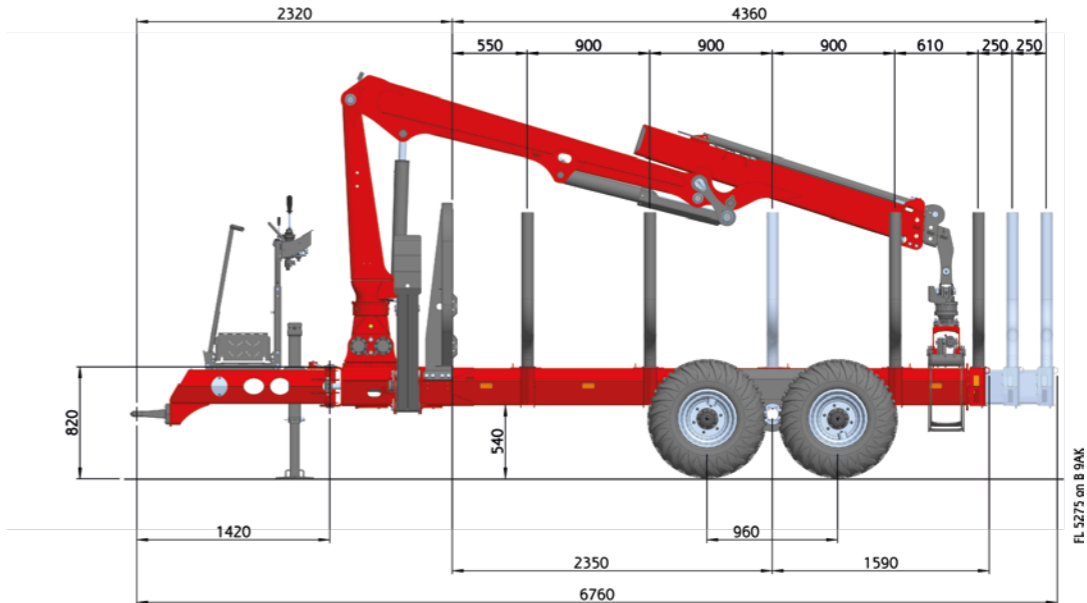
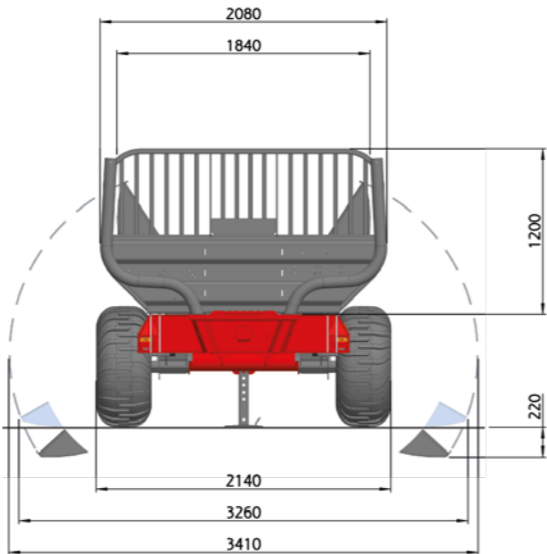
TIP: In combination with an 8.5-metre crane with 5.2 metres/tonne lifting torque, this trailer has not only a low dead weight, but also real lifting power when going about its work. Unprecedented in this class!



Example picture

B Series Technical Data		B 8K	B 9AK
tyre size		400/60-15.5"	
permitted total weight at 10 km/h on non-public roads	[tonnes]	11	12
permitted total weight at 25 km/h implementation	[tonnes]	9	10
load space	[m²]	1.9	
slew angle of the swing axle	[°]	+/- 12	
unladen weight with standard tyres*	[kg]	1720	1820
suitable for the following forestry crane models		FL 42 - 52	

* additional weight: 4TB opt. tyres: 150 kg
DLB: 100 kg • own oil supply: 200 kg



FORESTRY TRAILERS

C SERIES 10 & 12 TONNES

The C Series can be supplemented with a wealth of equipment variants, such as top seat, radio remote control unit, hydraulic auxiliary drive and even Z-crane.

The C Series comes as standard with a +700mm mechanical pull-out frame, via which the load area can be appreciably extended further.

All STEPA forestry cranes with up to 6 metres/tonne lifting torque and 9.5 metres reach can be mounted on this trailer, making it an absolute leader in its class.

TIP: A Z-crane can not only be folded up, but thanks to its linkage lever between crane column and lifting boom has enormous lifting power in the upper movement range.



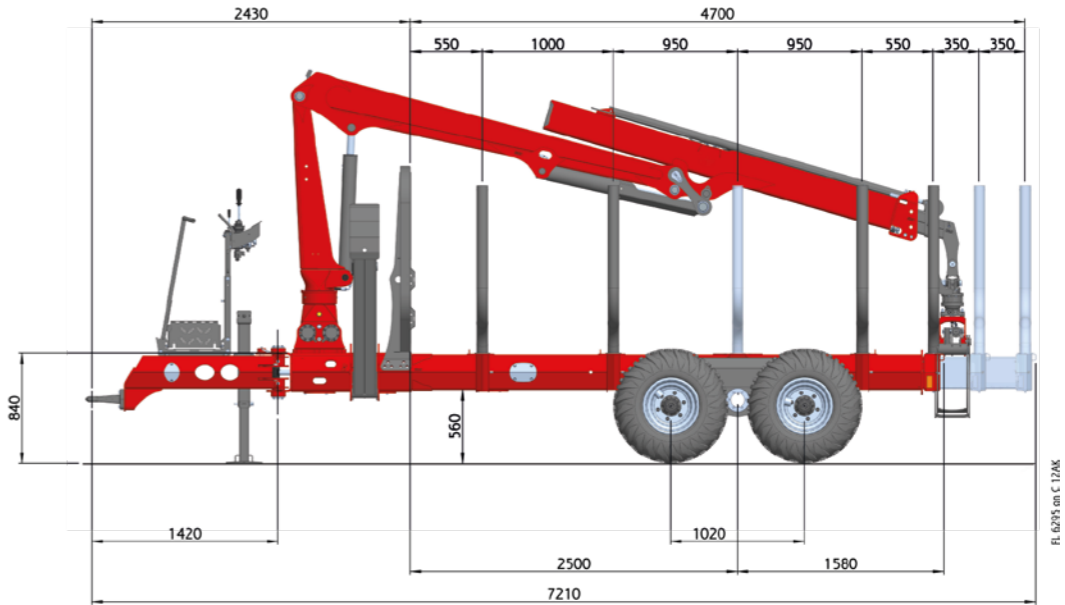
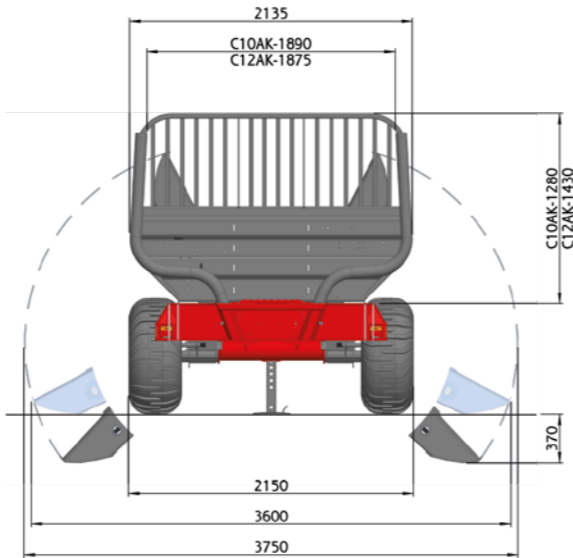
	Tyre sizes	Drive force at 250 bar	Drive speed at 2x40l/min
2RT-104	400/60Q-15.5	1.5 to	7.7 km/h
	480/45Q-17.0	1.5 to	7.9 km/h
	500/50Q-17.0	1.5 to	8.0 km/h
2RTS-118	500/50Q-17.0	2.9 to	4.0 km/h

C Series Technical Data		C 10AK	C 12AK
tyre size		400/60-15.5"	
permitted total weight at 10 km/h on non-public roads	[tonnes]	13	15
permitted total weight at 25 km/h implementation	[tonnes]	11	13
permitted total weight at 40 km/h implementation	[tonnes]	10	12
load space	[m²]	2.1	2.4
slew angle of the swing axle	[°]	+/- 12	
unladen weight with standard tyres*	[kg]	2150	2250
suitable for the following forestry crane models		FL & FZ 42 - 62	

* additional weight: 4TB-2RT-100: 60 kg • 4TB opt. tyres: 150 kg
DLB: 100 kg • own oil supply: 200 kg



Example picture



FORESTRY TRAILERS

M SERIES 14 & 16 TONNES

The new M Series is designed for even more powerful cranes and has greater load capacity than all previous forestry trailers from STEPA.

The frame can be mechanically pulled out by +700mm and the patented slewing drawbar with a slewing range of +/-40° comes as standard, as does the high-quality KTL priming and powder coating of the base frame.

An appropriately sized branch skip or round bale attachment can also be ordered as an option.

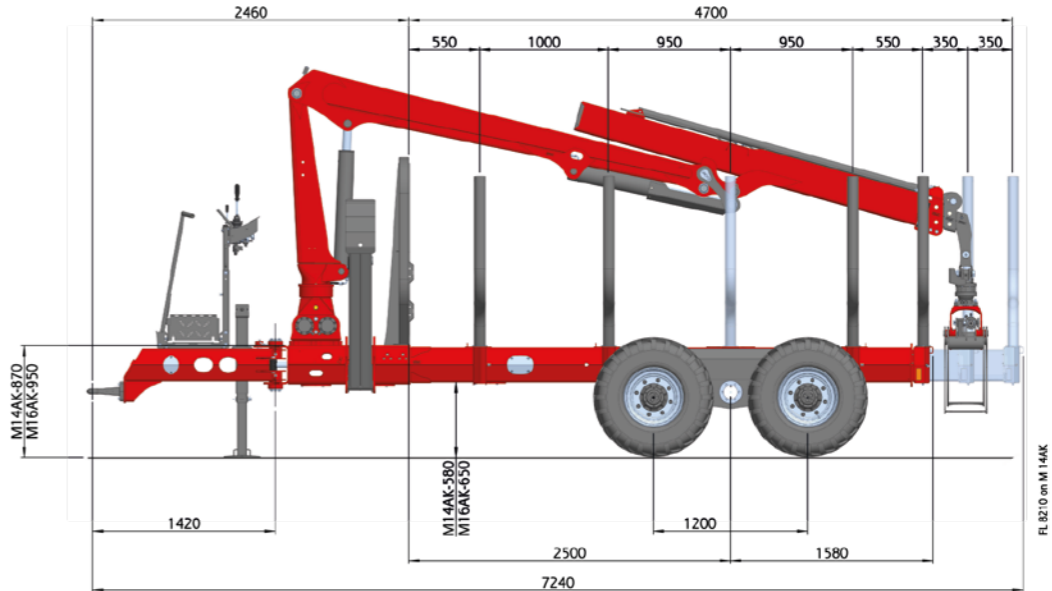
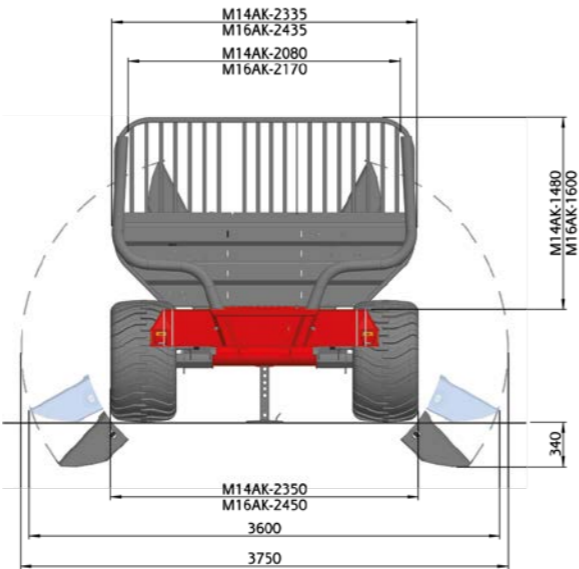
NOW NEW: Customers looking for their trailer in this class generally also have higher demands when it comes to ease of use. Now there is the 2-joystick combination (tractor cab & top seat) or radio joystick combination.



	Tyre sizes	Drive force at 250 bar	Drive speed at 2x40l/min
2RTS -118	500/50Q-17.0	2.9 to	4.0 km/h
	500/45Q-22.5	2.5 to	4.7 km/h
	550/45Q-22.5	2.4 to	4.8 km/h

M Series Technical Data		M 14AK	M 16AK
tyre size		500/50 - 17"	550/45-22.5"
permitted total weight at 10 km/h on non-public roads	[tonnes]	17	19
permitted total weight at 25 km/h implementation	[tonnes]	15	17
permitted total weight at 40 km/h implementation	[tonnes]	14	16
load space	[m²]	2.6	3.0
slew angle of the swing axle	[°]	+/- 12	
unladen weight with standard tyres*	[kg]	2470	2750
suitable for the following forestry crane models		FL+FZ from 52 + all Epsilon	

* additional weight: 4TB-2RT-118: 100 kg • DLB: 100 kg • own oil supply: 200 kg



FORESTRY TRAILERS

M-SERIES ADJUSTABLE AXLE

STEPA’s M-Series (M14 and M16) is also available with an hydraulically adjustable axle that can be easily moved back 520 mm and a mechanical rear extension of + 900 mm.

A twin stanchion above the axle provides for even more stability and flexibility. The adjustable variant of the M-Series thus makes the carrying of logs much easier.



Twin stanchion above the axle

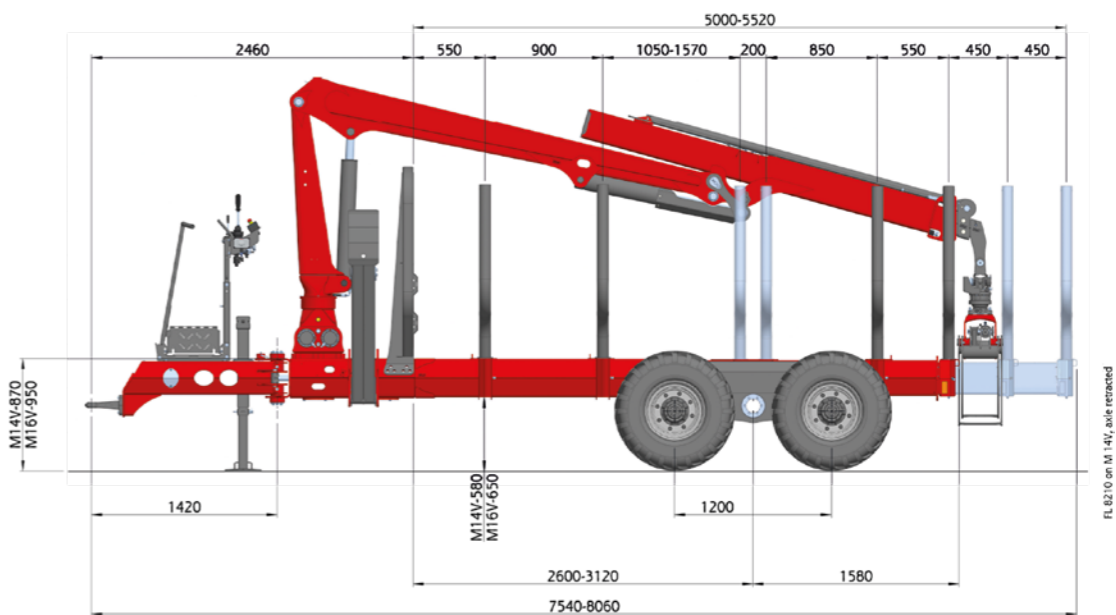
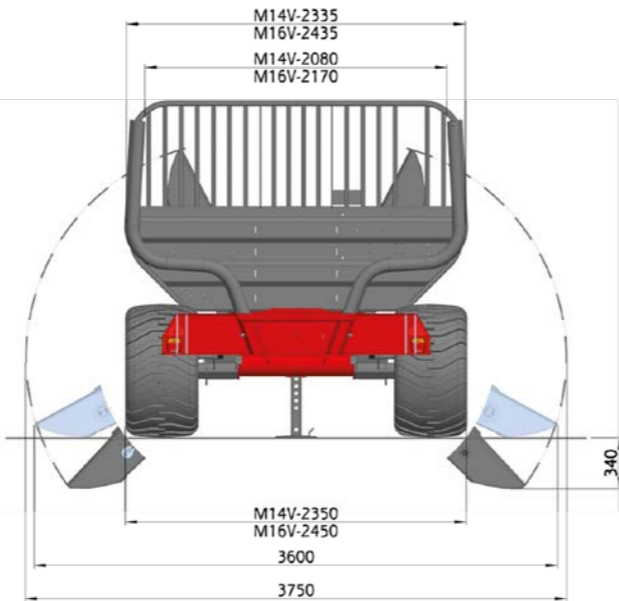


Example picture

	Tyre sizes	Drive force at 250 bar	Drive speed at 2x40l/min
2RTS -118	500/50Q-17.0	2.9 to	4.0 km/h
	500/45Q-22.5	2.5 to	4.7 km/h
	550/45Q-22.5	2.4 to	4.8 km/h

M Series Technical Data		M 14 V	M 16 V
tyre size		500/50 - 17"	550/45-22.5"
permitted total weight at 10 km/h on non-public roads	[tonnes]	17	19
permitted total weight at 25 km/h implementation	[tonnes]	15	17
permitted total weight at 40 km/h implementation	[tonnes]	14	16
load space	[m²]	2.6	3.0
slew angle of the swing axle	[°]	+/- 12	
unladen weight with standard tyres*	[kg]	2800	3100
suitable for the following forestry crane models		FL+FZ from 52 + all Epsilon	

* additional weight: 4TB-2RT-118: 100 kg • DLB: 100 kg • own oil supply: 200 kg



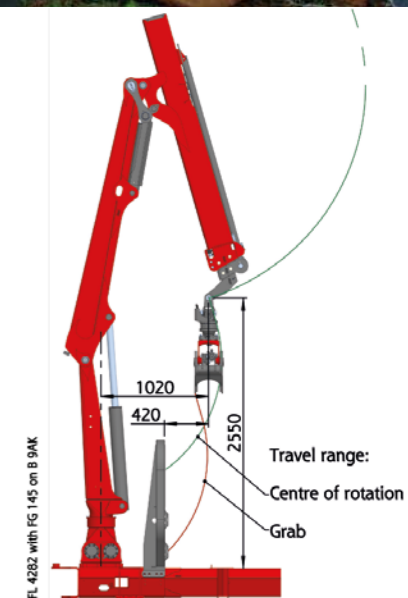
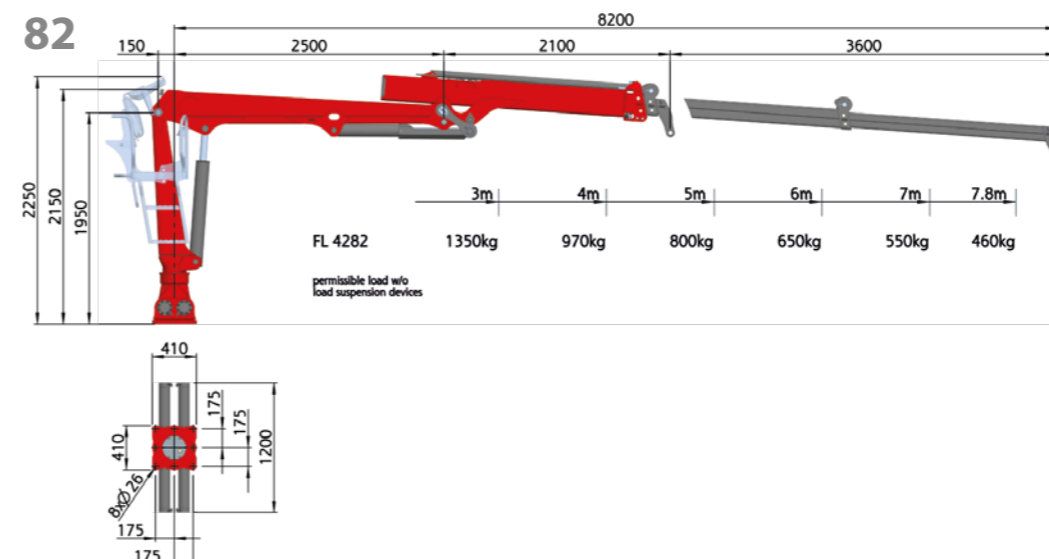
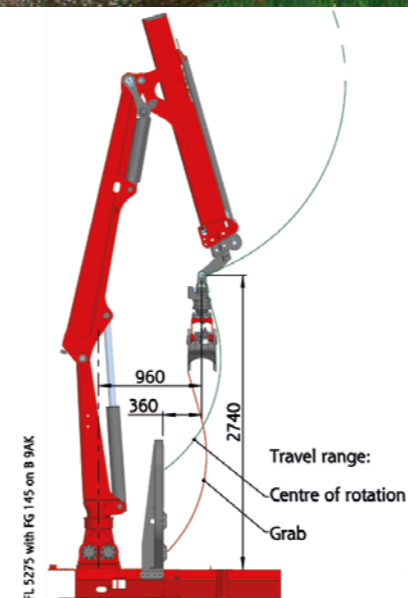
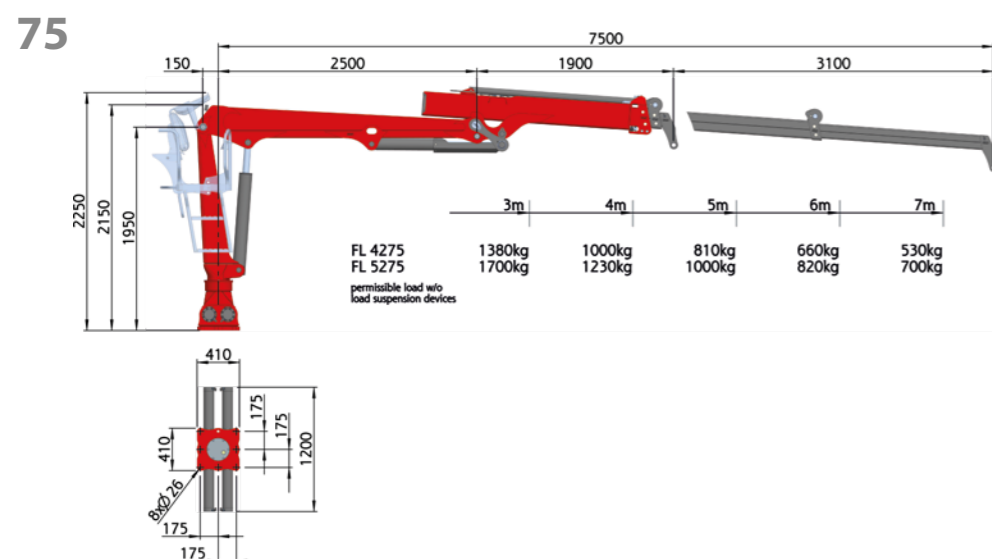
FORESTRY CRANE L-CRANE 7.5 & 8.2 M REACH

Compact, agile and made of high-strength S700 fine-grained steel - those are among the features of these short crane models with 7.5m & 8.2m reach.

Thanks to the knuckle boom mounted toward the rear combined with a double telescopic boom, the crane in its retracted state is very short and thus more agile in the forest.

TIP: The maximum lifting power in this boom position can be seen from the picture below. More power thanks to the better geometry.

FL Technical Data		4275	5275	4282
lifting torque, net	[kNm]	41	52	40
slewing torque, net	[kNm]	13	16	13
slewing range	[°]	340		
weight with 8-fold slider w/o grabber	[kg]	750	770	800
maximum operating pressure	[bar]	190	225	190
pump flow rate, recommended.	[l/min]	1x45 / 2x30		
recommended timber grabber		FG 145		



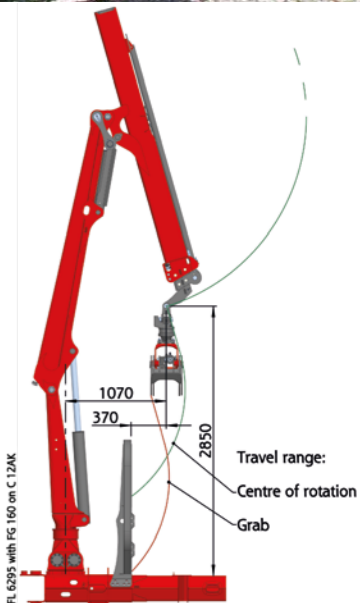
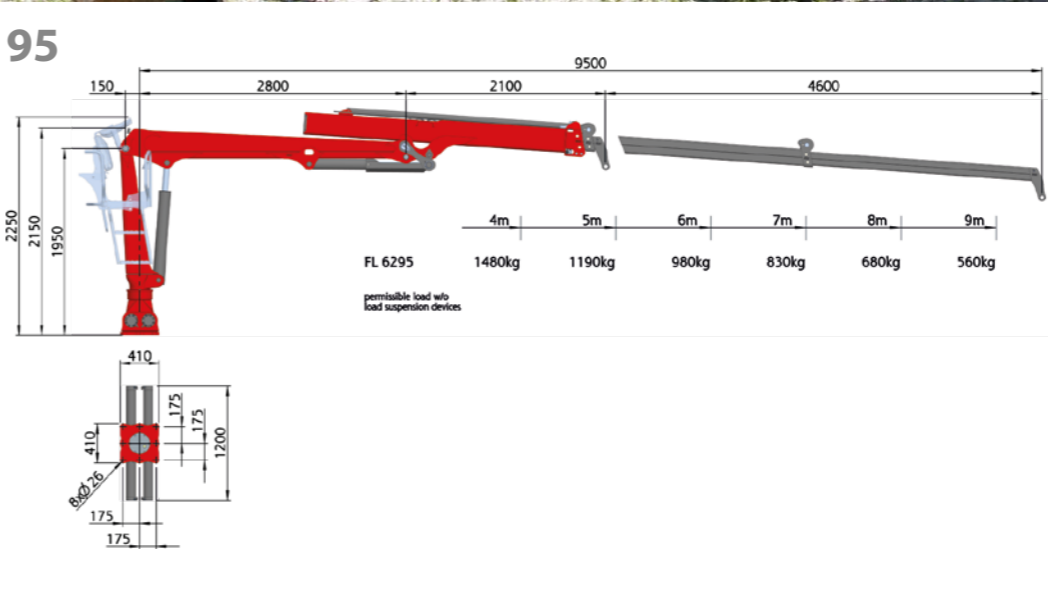
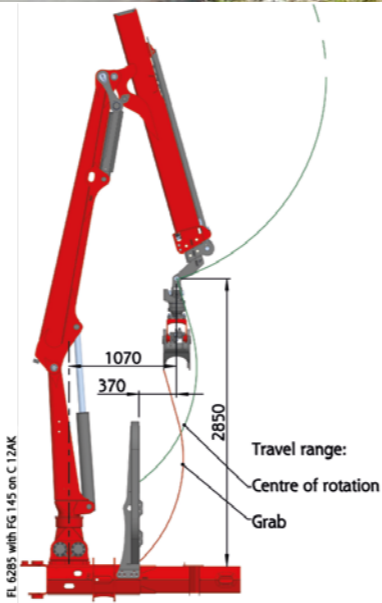
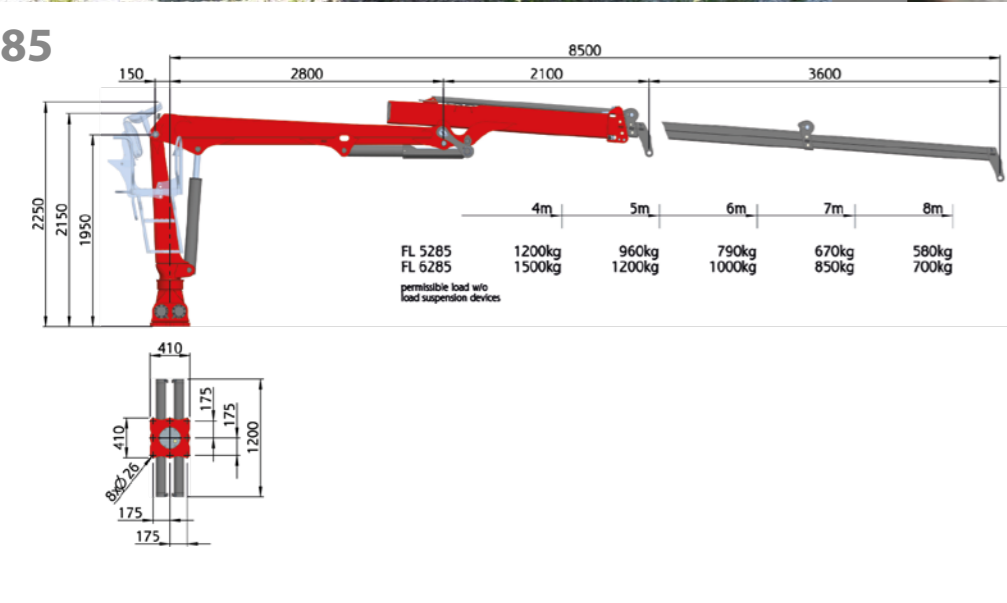
FORESTRY CRANE

L-CRANE 8.5 & 9.5 M REACH

The innovative double telescope system sees all hoses protected all the way to the grab by being fitted inside the boom system. The risk of the hoses being damaged by branches is thus minimised. Nevertheless, should it be necessary a defect hose can be easily replaced.

TIP: A double telescope system is appreciably quicker than a single telescope system. Anyone wanting to load quickly exploits this advantage for every work movement.

FL Technical Data		5285	6285	6295
lifting torque, net	[kNm]	50	62	61
slewing torque, net	[kNm]		16	
slewing range	[°]		340	
weight with 8-fold slider w/o grabber	[kg]	920	940	1000
maximum operating pressure	[bar]	225	220	
pump flow rate, recommended	[l/min]	1x45 / 2x30		1x55 / 2x35
recommended timber grabber		FG 145		FG 160



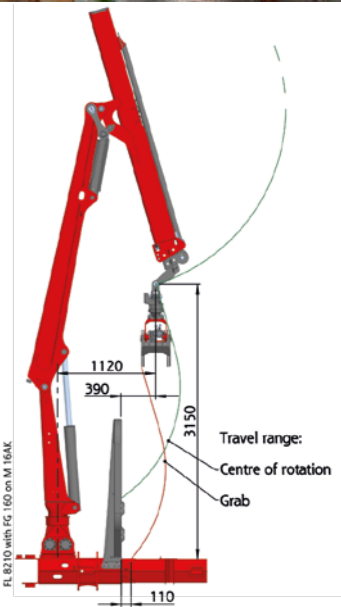
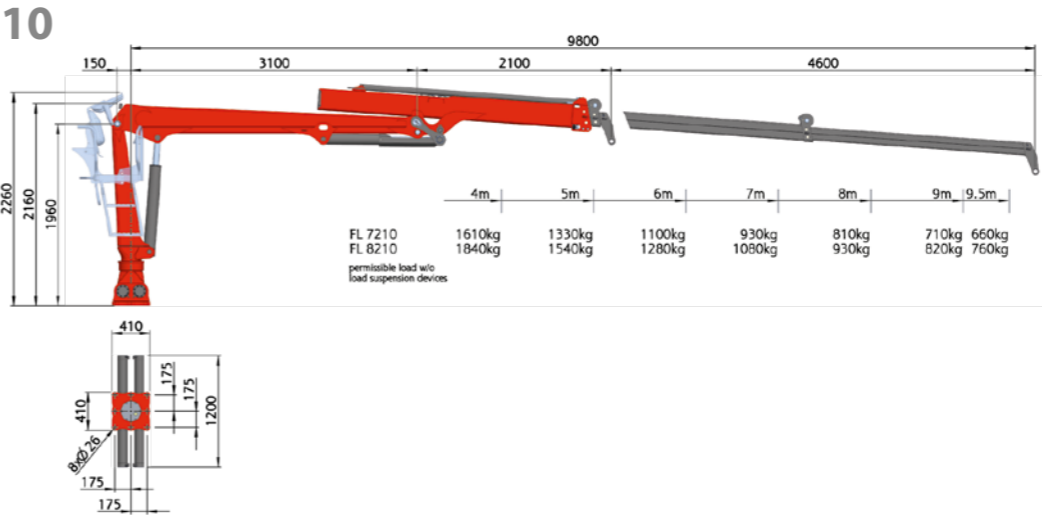
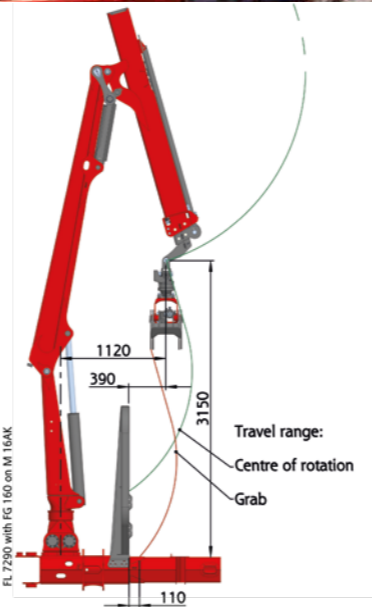
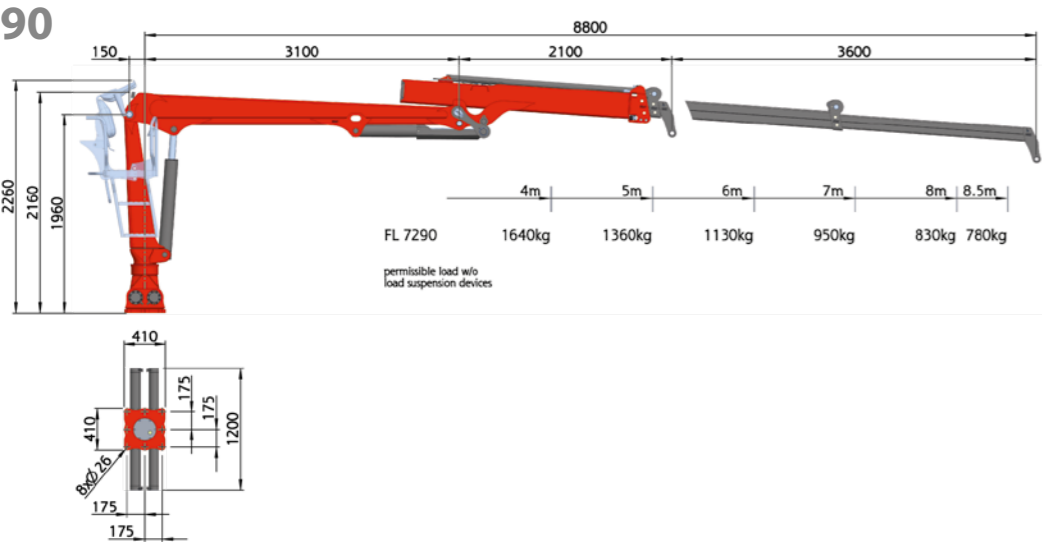
FORESTRY CRANE

L-CRANE 9.0 & 10.0 M REACH

This elite crane from STEPA has a reach of up to 10 metres. On steep slopes in particular cranes with a long reach are a key advantage whenever there are places where it is impossible to pull the tree trunks up to the forestry track and if when being cut to length the trunks do not all have to be pulled up really close.

TIP: A longer crane is also able to stack up higher piles of fuel wood, thus saving not only time but space as well.

FL Technical Data		7290	7210	8210
lifting torque, net	[kNm]	70	68	78
slewing torque, net	[kNm]	18		20
slewing range	[°]	340		
weight with 8-fold slider w/o grabber	[kg]	1100	1180	1200
maximum operating pressure	[bar]	205		
pump flow rate, recommended	[l/min]	1x70 / 2x45		
recommended timber grabber		FG 160		



FORESTRY CRANE

L-CRANE 11.0 M REACH

The longest crane on the forestry trailer market has a length of 11m and is equipped with a new, cleverly devised three-part telescopic system. Features of this new premium model include protected hoses all the way to the top of the grabber, compact design, unbeatable reach and excellent hook height.

Tip: The higher the hook height when total length is compact, the less power the crane loses before it's lifted the load over the stakes. Strong not only on the ground, but above all over the stakes.

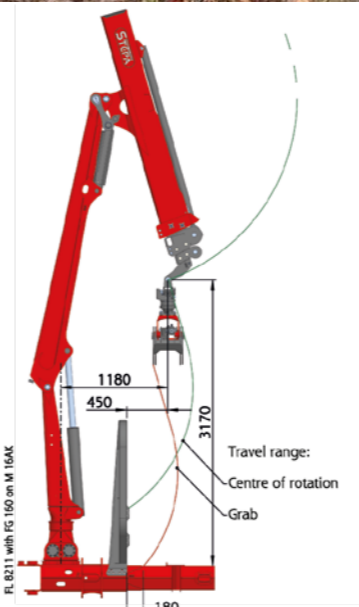
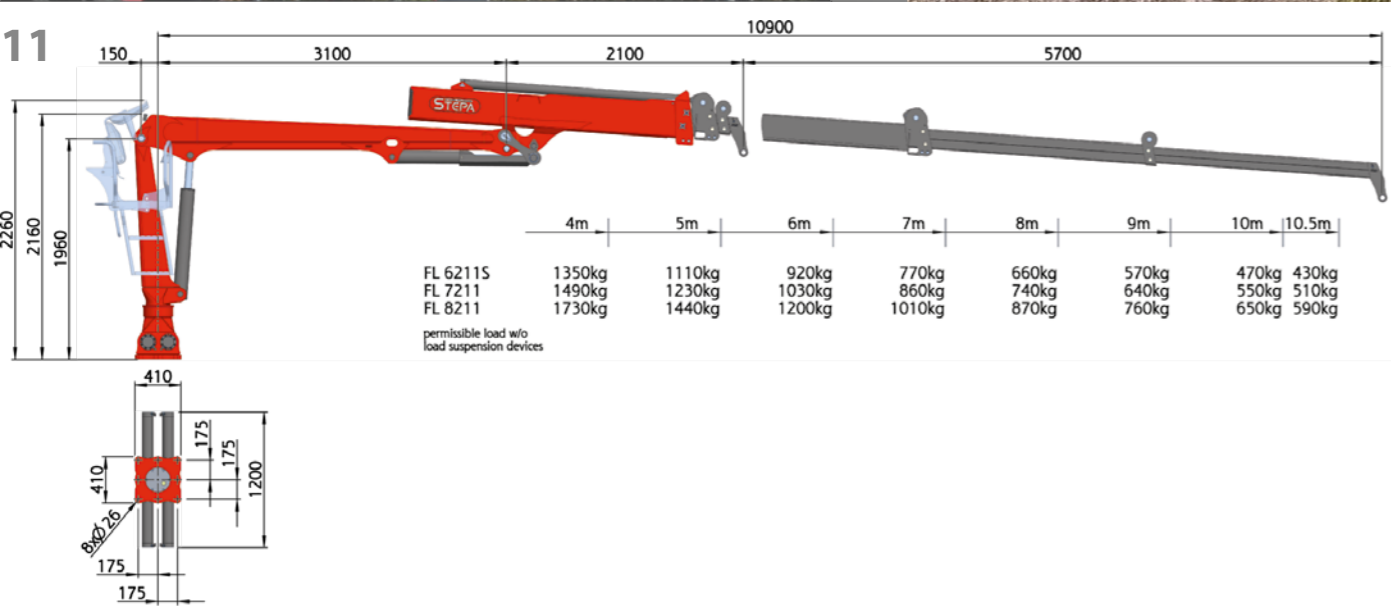
FL Technical Data		6211S	7211	8211
lifting torque, net	[kNm]	56	62	72
slewing torque, net	[kNm]	20	18	20
slewing range	[°]	340		
weight with 8-fold slider w/o grabber	[kg]	1300	1320	1340
maximum operationg pressure	[bar]	230	205	230
pump flow rate, recommended	[l/min]	1x55 / 2x35		
recommended timber grabber		FG 160		



Powerful knuckle boom



Example picture



FORESTRY CRANE Z-CRANE 8.0 M REACH

Every STEPA Z-crane is fitted with a linkage lever on the main boom. This gives Z-cranes better progression of lifting force in the important upper working range.

Another advantage is that the crane can be folded up. As a result, the trailer's centre of gravity can be optimised as required, whether laden or unladen.

TIP: More weight on the drawbar means greater tractor traction. Uphill slopes can thus be managed better.

FZ Technical Data		4280	5280
lifting torque, net	[kNm]	41	51
slewing torque, net	[kNm]	13	16
slewing range	[°]	340	
weight with 8-fold slider w/o grabber	[kg]	980	990
maximum operating pressure	[bar]	185	220
pump flow rate, recommended	[l/min]	1x45 / 2x30	
recommended timber grabber		FG 145	

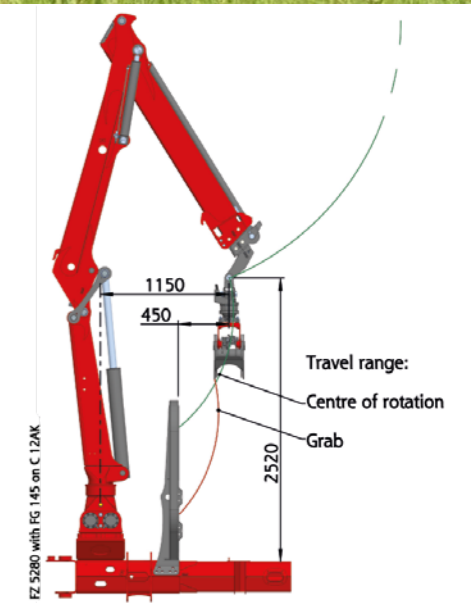
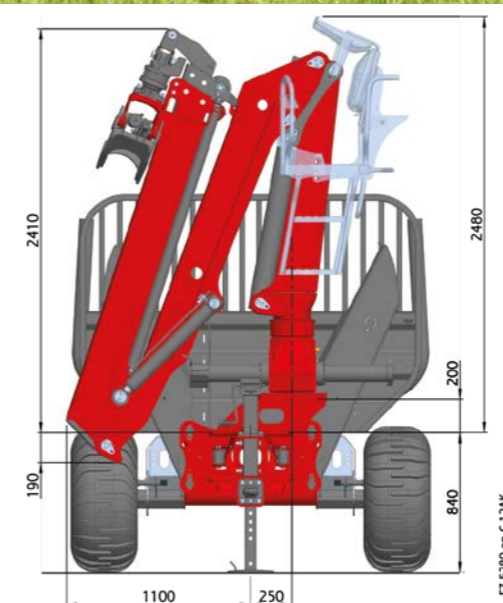
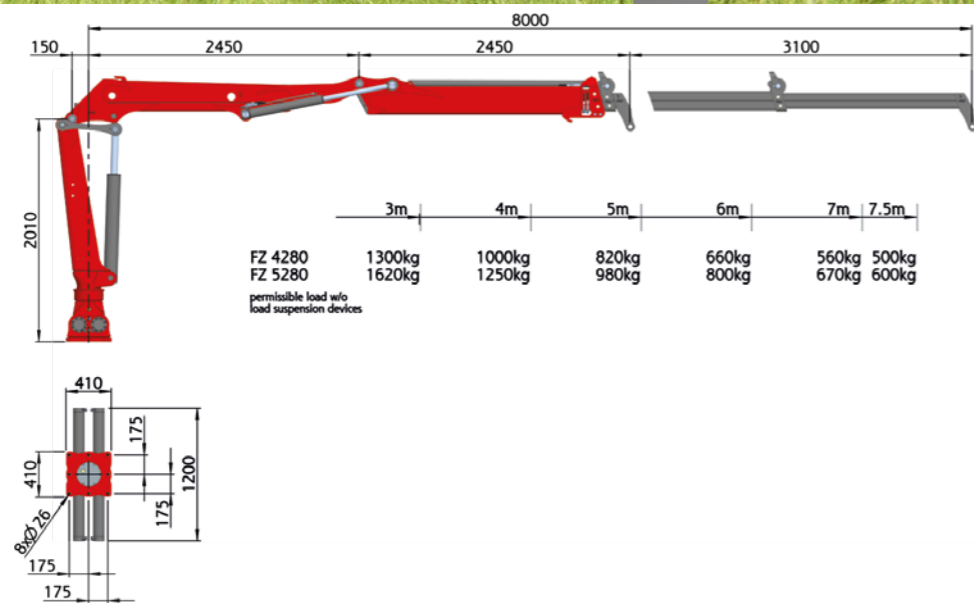


Pump and drive shaft - well protected in the drawbar



Example picture

80



FORESTRY CRANE

Z-CRANE 9.0 M REACH

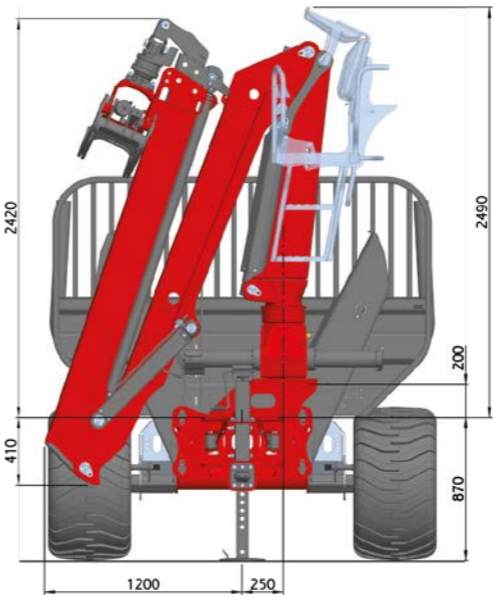
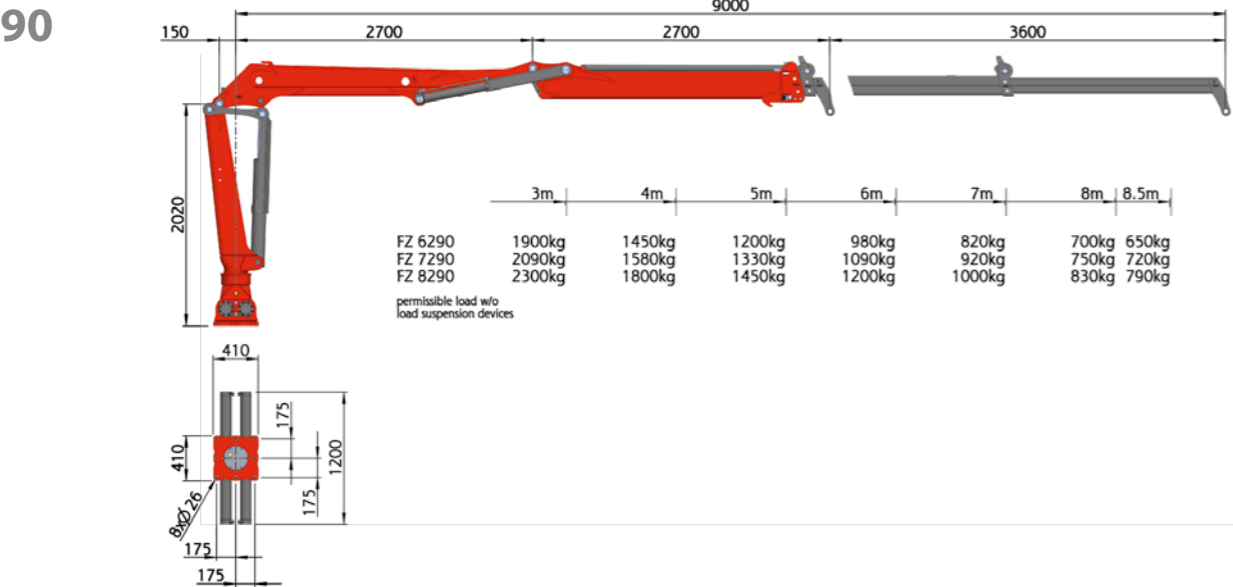
STEPSA's patented knuckle system enables Z-crane to have up to one metre longer reach than all rival models of the same length. This technical advantage was made possible by our crane construction know-how and our endeavour to always be able to offer customers an even better solution.

TIP: A Z-crane lifts heavier loads over the stakes than an L-crane with the same net lifting torque. Yet it compares favourably with L-crane on price. It's worth making the comparison!

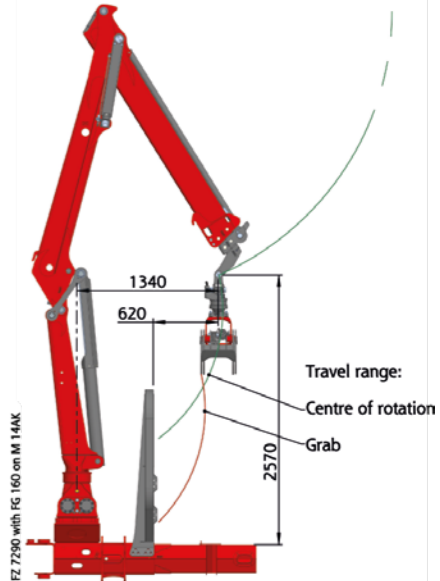
FZ Technical Data		6290	7290	8290
lifting torque, net	[kNm]	61	67	75
slewing torque, net	[kNm]	16	22	24
slewing range	[°]	340		
weight with 8-fold slider w/o grabber	[kg]	1070	1140	1150
maximum operating pressure	[bar]	220	240	260
pump flow rate, recommended	[l/min]	1x55 / 2x40		1x70 / 2x45
recommended timber grabber		FG 160		



Example picture



FZ 7290 on M 14AK



FZ 7290 with FG 160 on M 14AK

TRACTOR CRANE

Z-CRANE 8.0 M REACH

The compact Z tractor crane can be easily folded up within the vehicle’s width. Its own low weight is very important in particular for small tractors.

TIP: On request, STEPA can supply the right, perfectly fitting attachments along with the tractor.

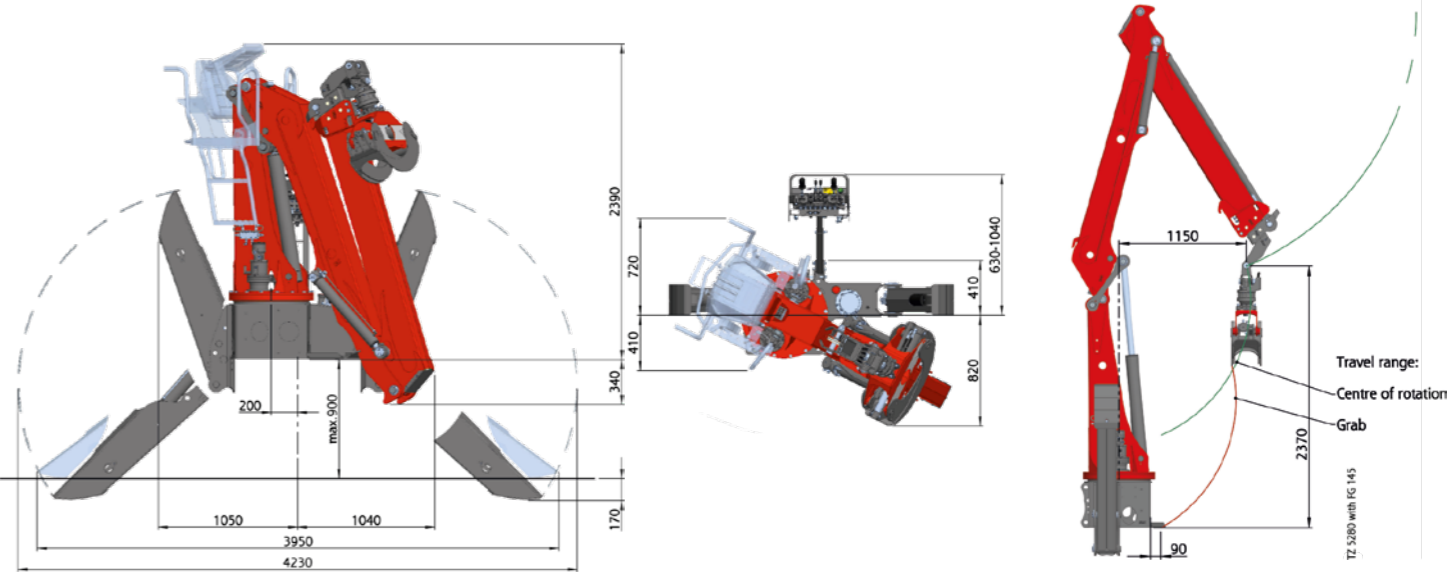
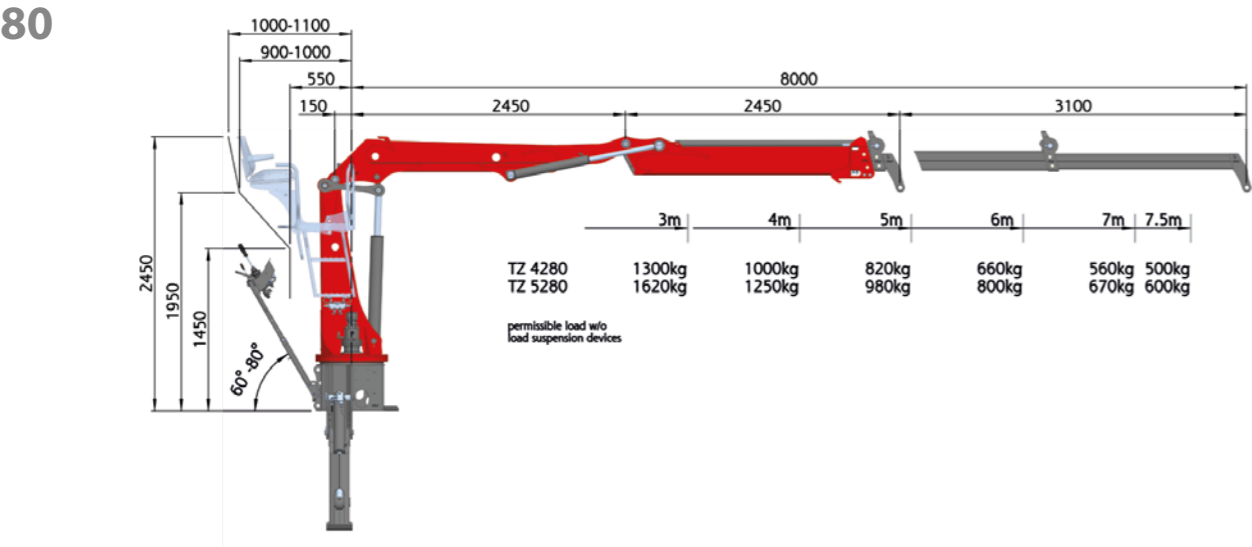
TZ Technical Data		4280	5280
lifting torque, net	[kNm]	41	51
slewing torque, net	[kNm]	13	16
slewing range	[°]	330	
weight with 8-fold slider w/o grabber	[kg]	1300	1480
maximum operating pressure	[bar]	185	220
pump flow rate, recommended.	[l/min]	1x45 / 2x30	
recommended timber grabber		FG 145	
recommended net tractor weight		3800	4000



Strong, short, protected cylinders



Example picture



TRACTOR CRANE

Z-CRANE 9.0 M REACH

The larger tractor cranes with a reach of 9.0 metres are available in two different lift classes - with 6.2 or 7.2 metres/tonne of lifting torque. The lifting & knuckle cylinder protection included as standard on the largest tractor crane prevents any damage to the piston rods.

TIP: Every tractor crane can also be mounted on other trailers. Your dealer can provide further details.

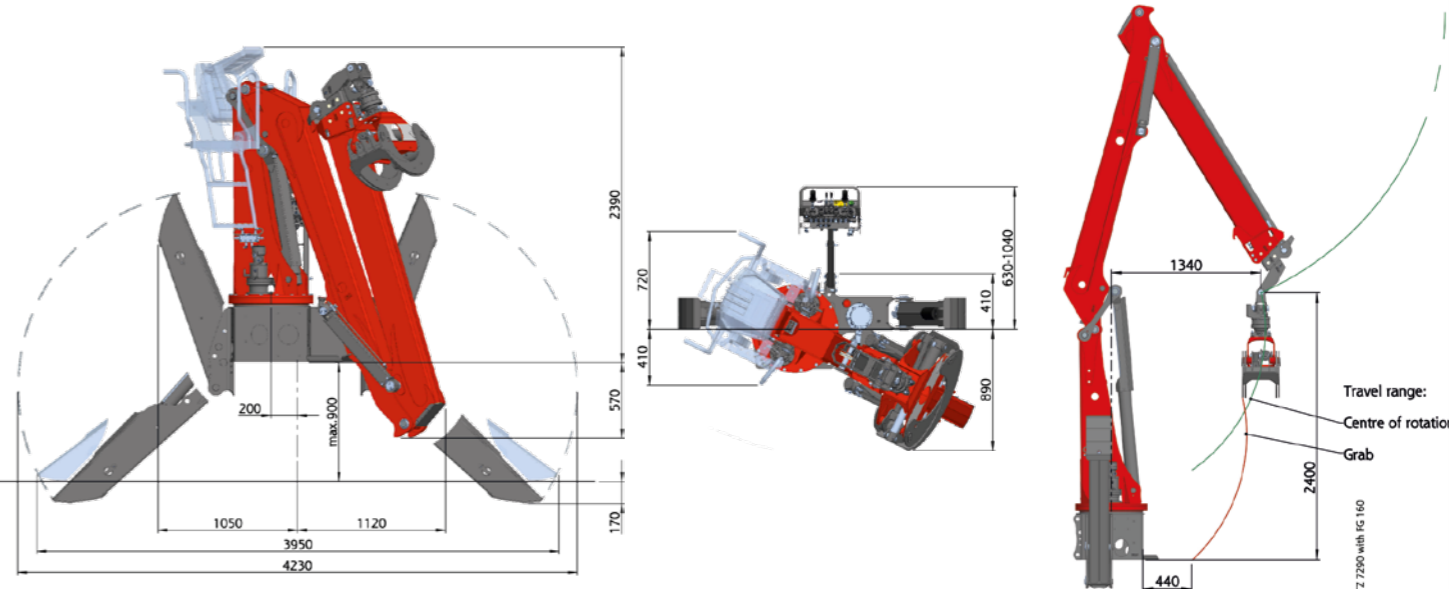
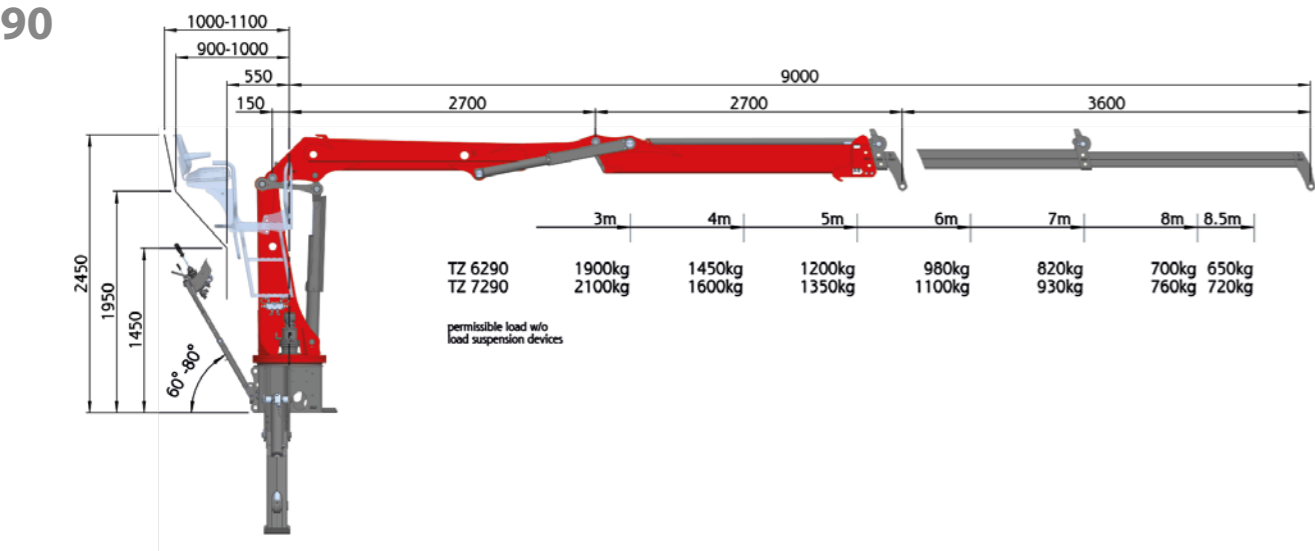
TZ Technical Data		6290	7290
lifting torque, net	[kNm]	61	68
slewing torque, net	[kNm]	16	
slewing range	[°]	330	
weight with 8-fold slider w/o grabber	[kg]	1600	1620
maximum operating pressure	[bar]	220	240
pump flow rate, recommended.	[l/min]	1x55 / 2x40	
recommended timber grabber		FG 160	FG 160S
recommended net tractor weight		4500	5500



High closing force



Example picture



PALFINGER EPSILON OFF-ROAD / C-CLASS AT STEPA

With the STEPA M16, global market leader EPSILON from the professional forestry segment, a sister company of STEINDL-PALFINGER, combines forestry trailer and radio remote control.

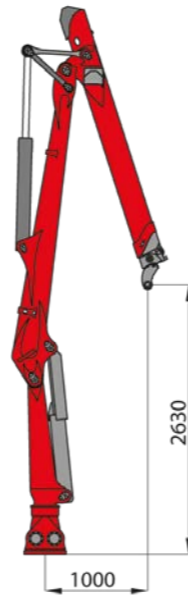
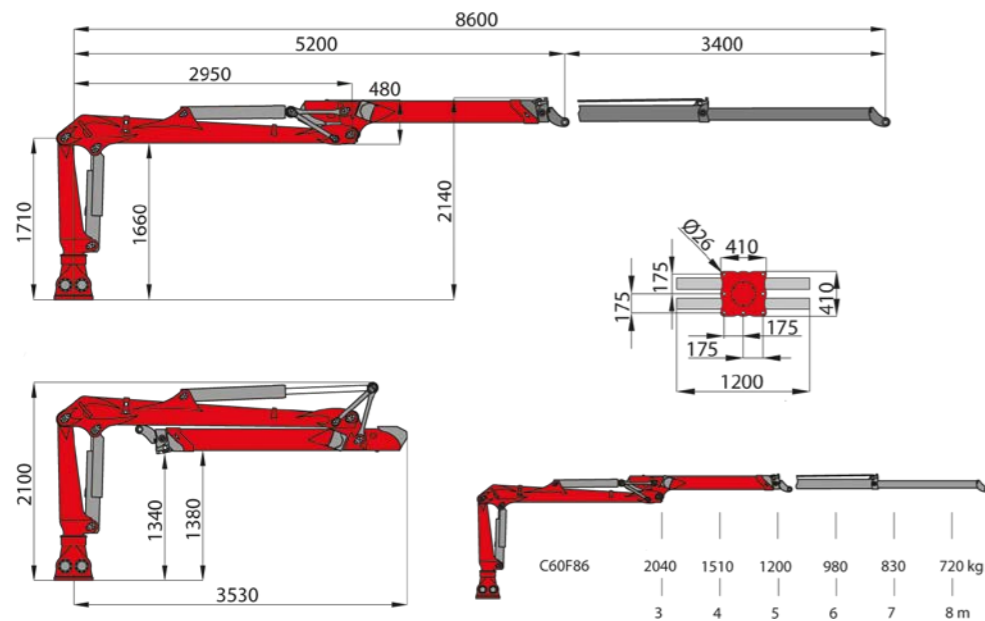
NOTE: At the Eisbethen site alone near Salzburg around 5,000 cranes are made annually for the forestry and recycling sector. This know-how is reflected in the many detailed solutions provided by STEPA and PALFINGER-EPSILON.

CF Technical Data		C60F86	C70F86	C80F86
lifting torque, net	[kNm]	61	71	81
slewing torque, net	[kNm]	20	22	24
slewing range	[°]	335		
weight w/o pin-joint / rotator	[kg]	1140	1160	1160
maximum operating pressure	[bar]	200	220	240
pump flow rate, recommended	1K [l/min]	1 x 70	1 x 80	
	2K [l/min]	2 x 45		
recommended timber grab		FG 27		

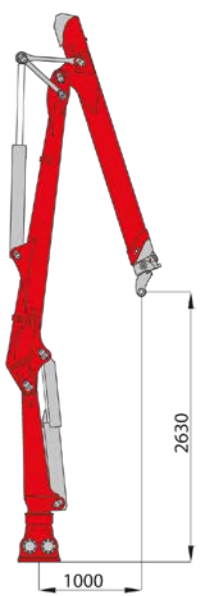
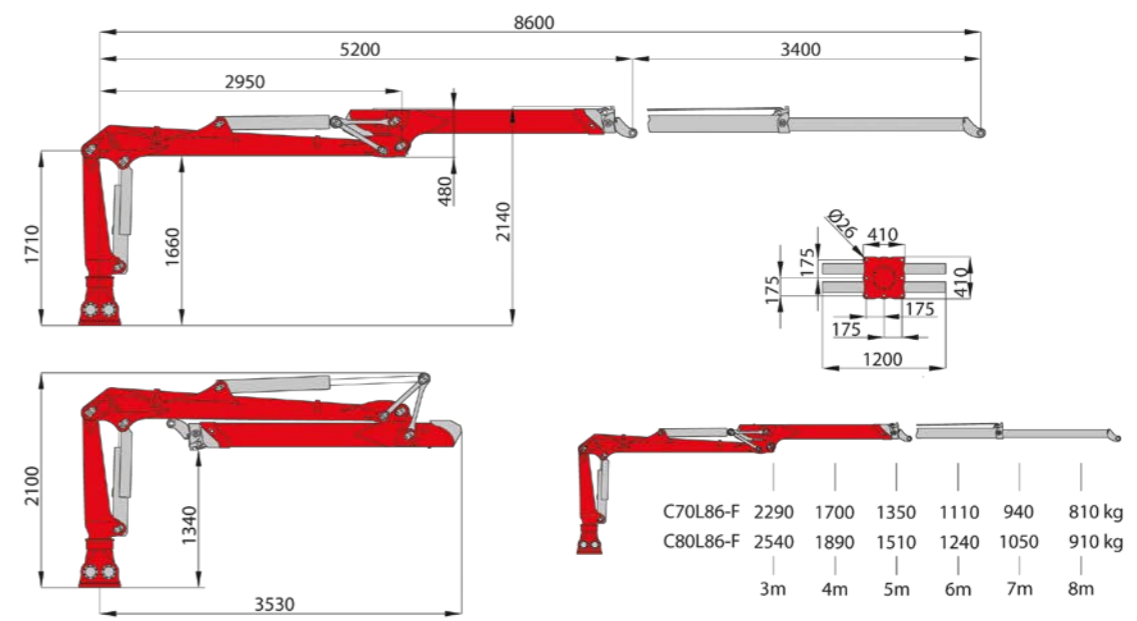


Example picture

C60F



C70F/ C80F



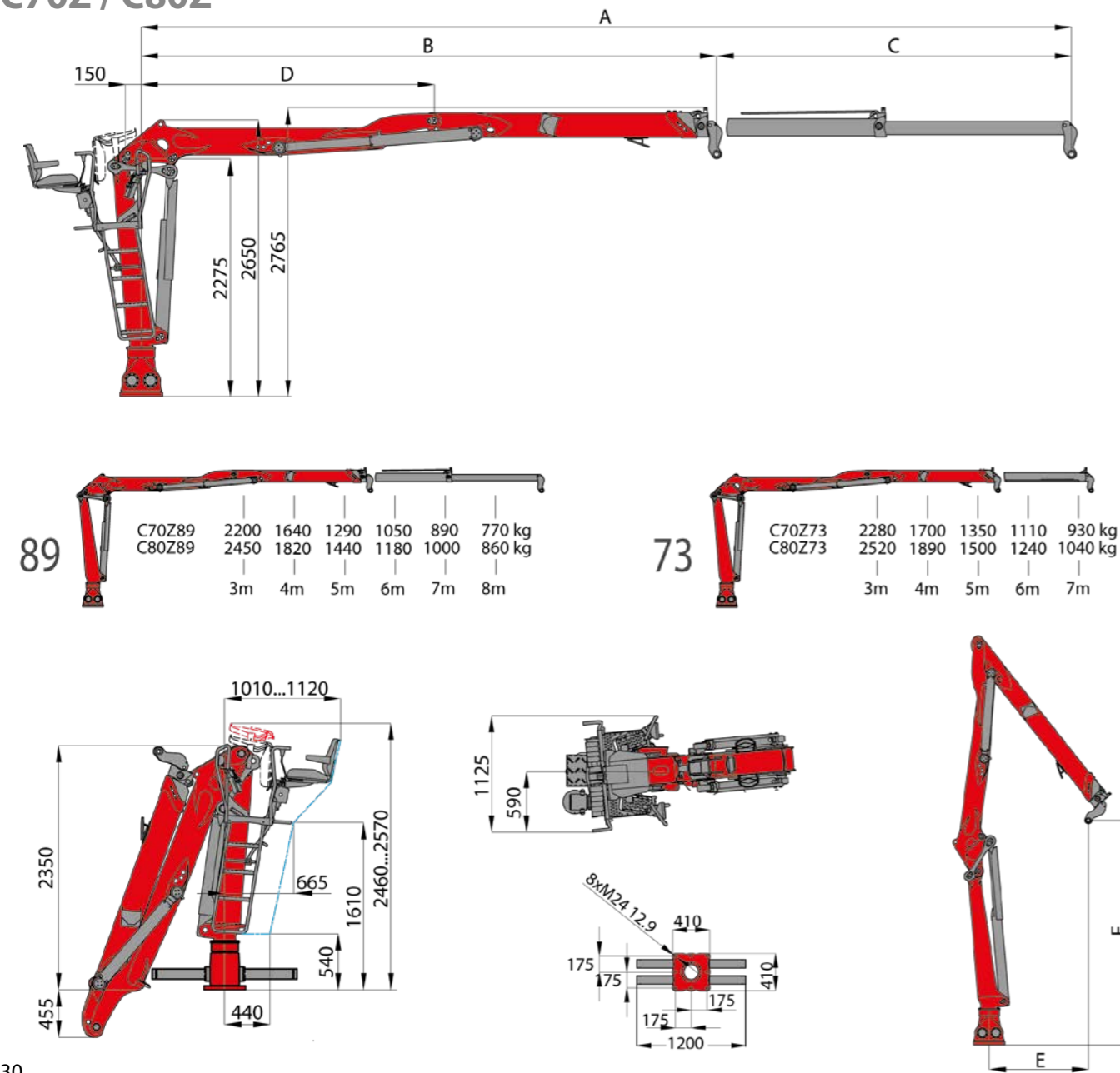
PALFINGER EPSILON ON-ROAD / C-CLASS AT STEPA

From the PALFINGER EPSILON On-Road series cranes that can be mounted onto STEPA's M series of forestry trailers include the Z-cranes.

TIP: Exclusively available from STEPA are PALFINGER-EPSILON Z-cranes that also have flap-down stabilisation already integrated in the forestry trailer.

	89	73	CZ Technical Data		C70Z73	C70Z89	C80Z73	C80Z89
A	8915	7250	lifting torque, net	[kNm]	68	66	76	74
B	5515	5400	slewing torque, net	[kNm]	18		20	
C	3400	1850	slewing range	[°]	335			
D	2810	2810	weight with 8-fold slider w/o grab	[kg]	1540	1620	1560	1640
E	1300	1230	maximum operating pressure	[bar]	220		240	
F	2940	3030	pump flow rate, recommended	1K [l/min]	1x 70			
				2K [l/min]	2x 45			
			recommended timber grab		FG 27			

C70Z / C80Z



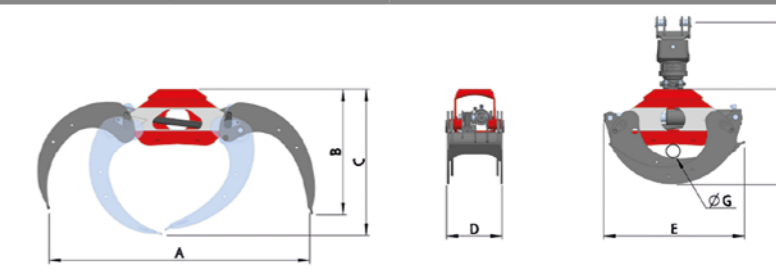
GRABBERS FOR REALLY GETTING TO GRIPS

STEPA offers a multitude of timber grabber types for forestry management use.

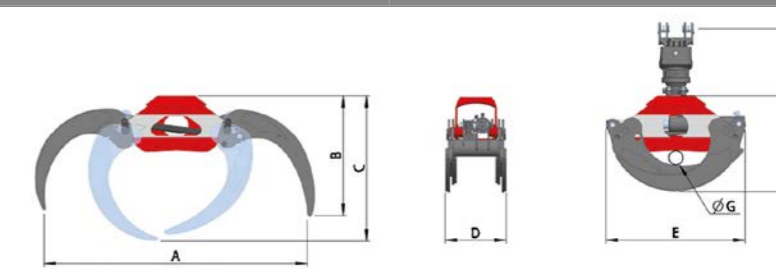
Beginning with an opening width of 1.33m and going all the way up to 1.80m. For some grabber types there are also strengthened versions and finger grabbers.

TIP: STEPA timber grabbers have a high closing force. So that the tree trunks and branches cannot easily slip out.

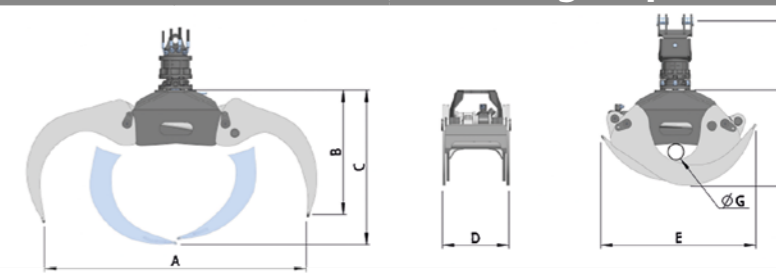
FG 130 FG 145 (S) FG 160 (S) FG 180



FG 145F FG 160F



FG 27 FG 37 Palfinger Epsilon



Type	A	B	C	D	E	F	G
	[mm]						
FG 130	1330	685	795	266	755	525	80
FG 145	1450	695	815	266	760	510	90
FG 145F	1450	670	800	296	760	510	90
FG 145S	1450	695	815	270	760	510	90
FG 160	1600	770	905	336	865	555	110
FG 160F	1600	730	890	366	835	555	110
FG 160S	1600	770	905	342	865	555	110
FG 180	1800	670	930	342	885	570	105
FG 27	1480	760	860	440	820	540	100
FG 37	1570	800	920	440	930	570	100



Grabber		FG130	FG145	FG145F	FG145S	FG160	FG160F	FG160S	FG180	FG 27	FG 37
cross-section	[m²]	0,22	0,25	0,25	0,25	0,30	0,30	0,30	0,32	0,26	0,36
closing force at 200 bar	[kN]	8,6	9,9	9,9	9,9	12,7	12,7	12,7	11,8	14,1	13,1
weight	[kg]	95	100	125	105	130	160	145	150	170	180
maximum load	[kg]	2500	2500	2500	2500	3000	3000	3000	3000	4000	4000

Rotator		GR 463	GR 55	GV6-RF
slewing range		endless	endless	endless
swing torque at 200 bar	[kNm]	0,9	1,05	1,9
weight	[kg]	30	35	45
maximum load	[kg]	4500	5500	6000
		series	optional	series

Legend	
FG	forestry grabber
NUMBER STEPA	opening width
NUMBER EPSILON	cross-section
F	finger grabber
S	for heavy use

LOG SPLITTERS

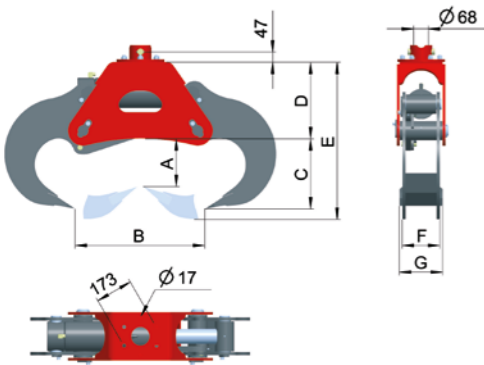
QUICK & SAFE

The combination of grab and log splitter is the ideal solution for splitting knotty and gnarled trunks.

The log splitter is fed using the crane. After it has been split the timber can be sorted, stacked or immediately loaded.

TIP: Visit our YouTube channel and see for yourself how quickly the work is done using our two-grab system.

Log splitter SPZ		20	24
splitting force at	190 bar	15.5 to	18.5 to
	220 bar	18.0 to	21.5 to
	250 bar	20.0 to	24.5 to
press force at	190 bar	336.0 kN	431.5 kN
	220 bar	389.5 kN	499.5 kN
	250 bar	442.0 kN	567.5 kN
recommended power density	[l/min]	50	60
maximum operating pressure	[bar]	250	
dead weight	[kg]	285	395



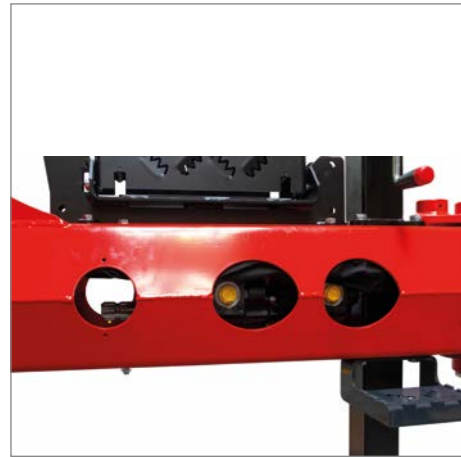
Type	SPZ 20	SPZ 24
A	315	420
B	800	950
C	410	490
D	395	435
E	865	1015
F	215	240
G	240	265



forestry crane FL8211

EQUIPMENT

PATENTED SLEWING DRAWBAR



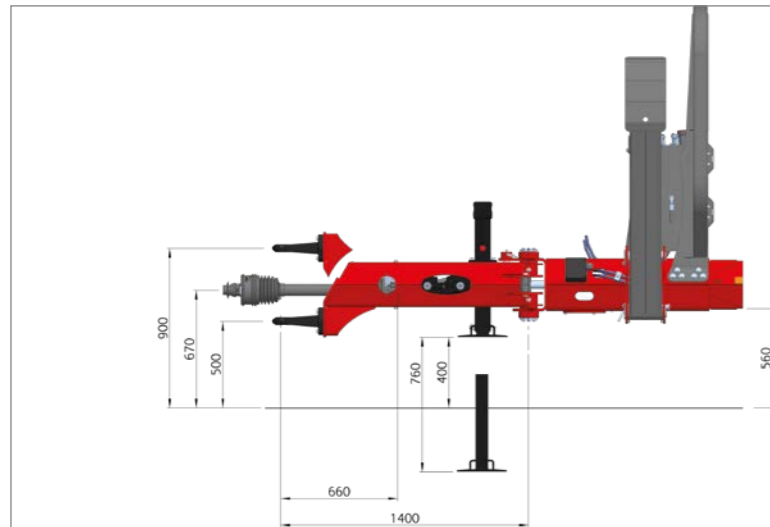
Pump well protected in the drawbar



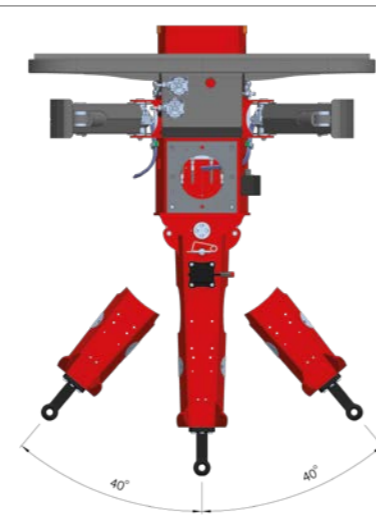
Two-stage hand crank jack



Hydraulic jack



Top and bottom hitch can also be retrospectively rotated



+/- 40 degrees slewing range



Joystick control times TWO

Easily and flexibly - With the new fully electric joystick control system the forestry crane can be operated from the top seat or driver's cab.

EQUIPMENT

CONTROL MODES



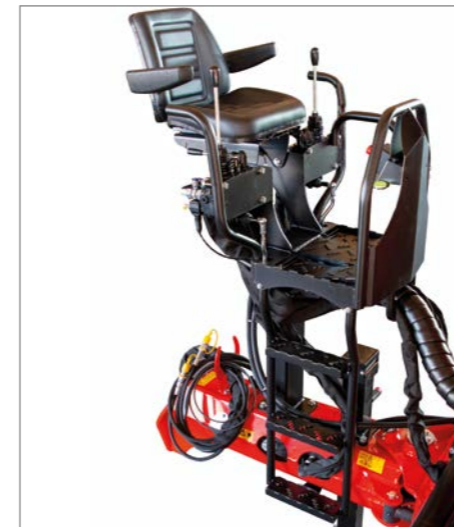
Standard ON-OFF one or two-circuit control system



Rotary level two-circuit control system



Joystick hydraulic/electric two-circuit control system



Drawbar seat two-circuit control system



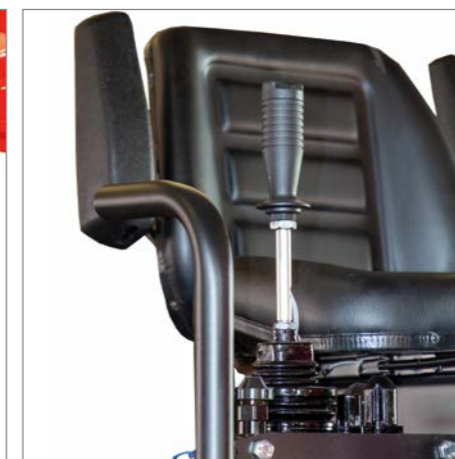
Top seat two-circuit control system



Radio remote control Joystick top seat



Safe access up to the standing platform

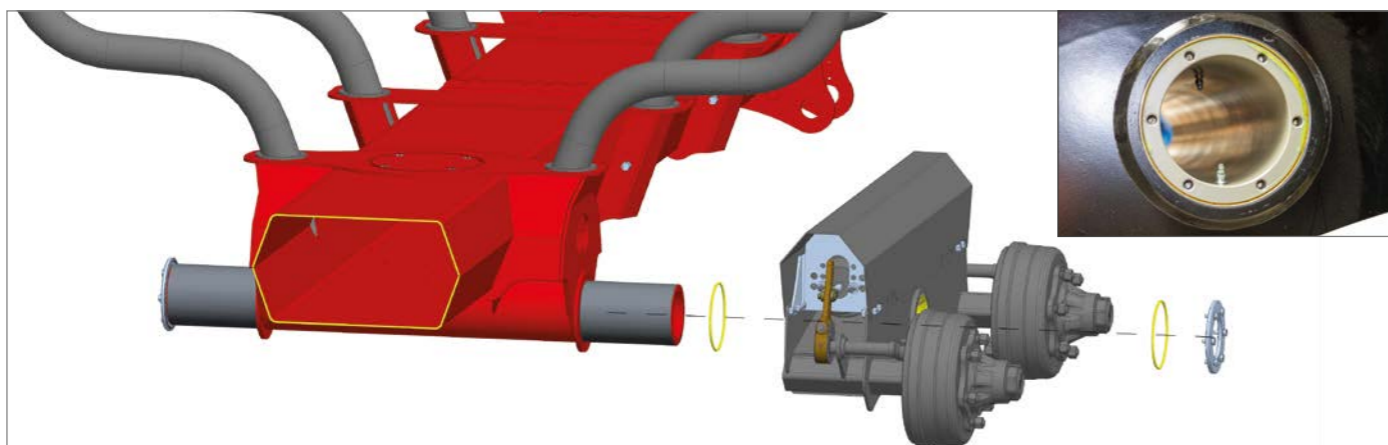


Top seat with electric additional function



Plug-in couplings for an add-on function

SAFETY AND EASE OF USE FOR DRIVER AND MACHINE



Hexagonal frame and sealed bearing points

Sealed bearing points on the bogie axle and the slewing drawbar ensure even greater ease of use. Two lubricating nipples at the points put under greatest strain increase the bearing points' life.



Forwarder stake bench optional for C- and M-Series available

SAFETY AND EASE OF USE FOR DRIVER AND MACHINE



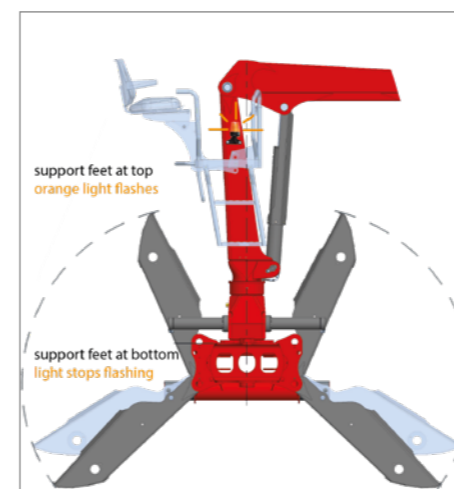
EMERGENCY STOP mechanism always within reach



Operating signs always in view



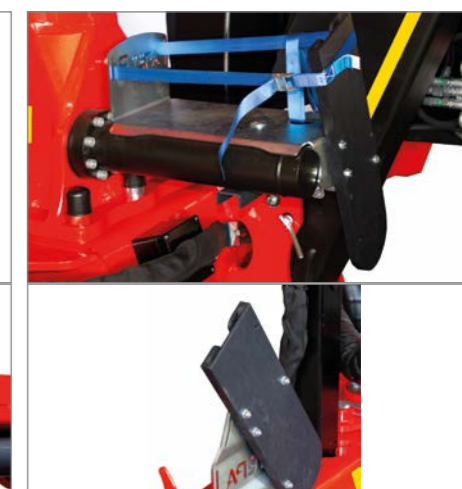
Protected and covered hose runs



Stabilisation reminder system for more safety



Knuckle cylinder protection on Z- and L-crane



Chain saw bracket cannister bracket



Immobilisation brake with hydraulic 25 km/h brake system

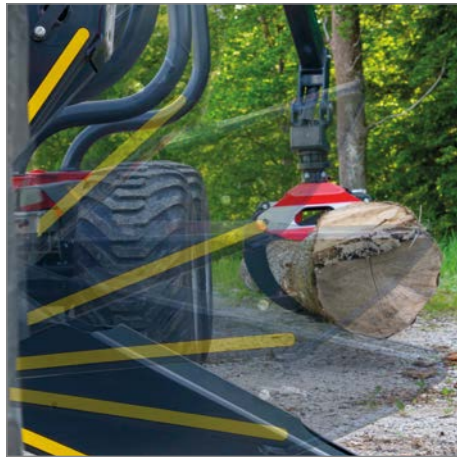


Digital operating hours counter

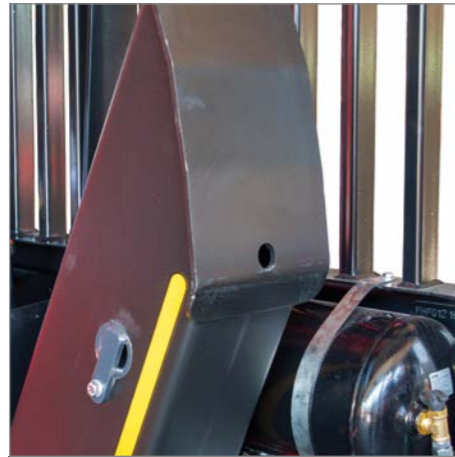


Vibration meter optional

EQUIPMENT STABLE & PROTECTED



Flap down
minimal space needed



Large contact area
optimum ground adaption



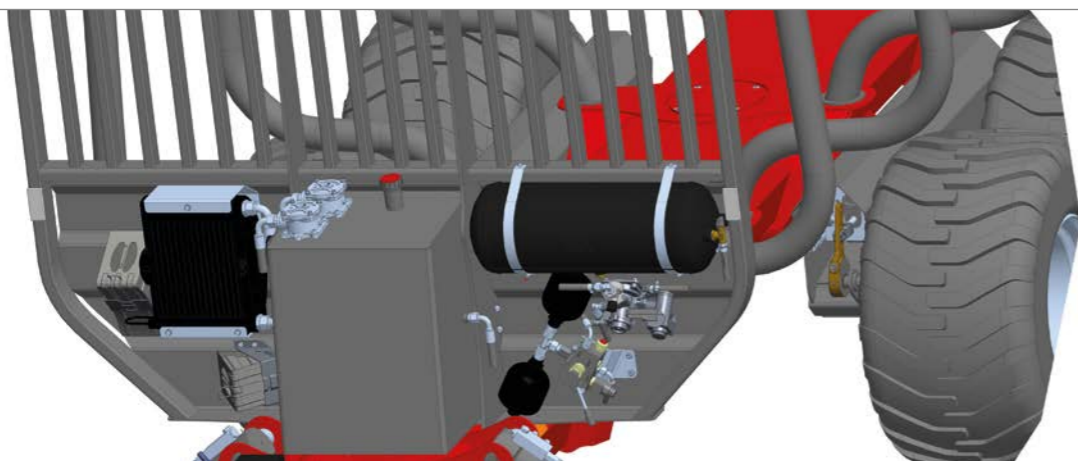
Pendulum brake
single-acting

4-wheel braking
as standard



Brake system & auxiliary drive

A hydraulic, pneumatic or combined brake system can be supplied, as required. The use of a hydraulic auxiliary drive system from Black Bruin makes it possible to master even difficult stretches of terrain. At STEPA every auxiliary drive is equipped with an automatic safety shut-off function.



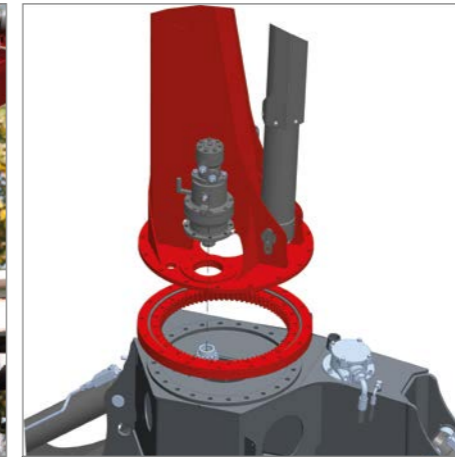
Front grille providing top protection

The brake system, oil cooler and chocks are easily accessible, yet very well protected.

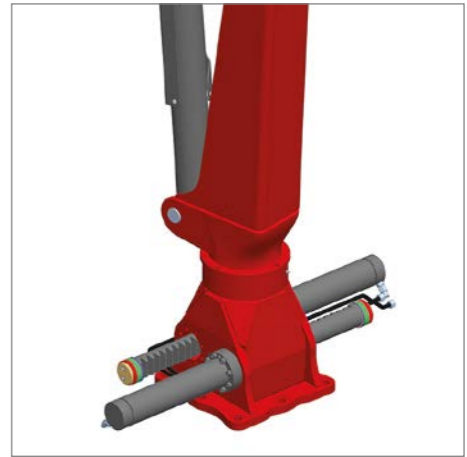
EQUIPMENT STEPA HIGHLIGHTS



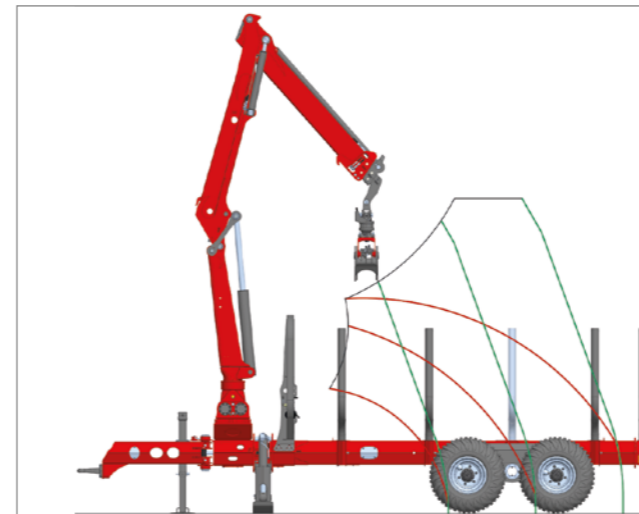
Logging winch (optional)
7mm-thick and 40m-long cable with
tensile force of 1.5 t



Ball slewing ring
Tractor cranes have a crane column with
a hardened ball rim bearing and slew
transmission inclusive of brake.



Double slewing system
Double slewing system in an oil bath,
two robust round gear racks & end posi-
tion damping

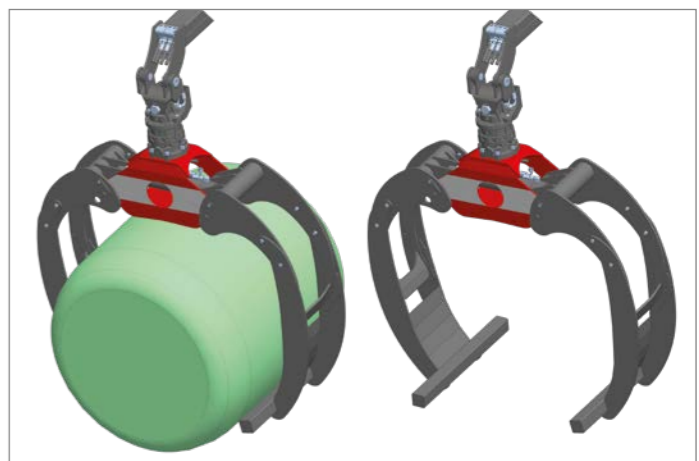


Enormous lifting power

The linkage lever between crane column and lifting boom enables the STEPA Z-crane to lift up to 60 percent more in the upper working positions, over the stakes and at close quarters than a forestry crane without a linkage lever.



Silo bale attachment
opening width with SBAR for timber grabber
FG 160 = 1360 mm or FG 180 = 1560 mm



Ideal for transporting
straw and silo bales

THE PERFECT PARTNER FOR FORESTRY MANAGEMENT



STEPA Farmkran GmbH
Christophorusstraße 28
5061 Elsbethen / AUSTRIA
T +43 662 / 636 404-0
F + 43 662 / 636 404-3
E office@stepakran.com

Follow us



Your STEPA partner:

ST37/1123_EN

This brochure is intended for international use. The availability of some models and the standard specifications and optional extras may vary from country to country. STEPA reserves the right to make changes to designs and technical specifications at any time and with no prior notice without in any way being committed to carry these over to units already sold. All information, descriptions and imagery was up to date at time of going to print, but can also be changed without prior notice. Illustrations may show specific country versions, optional features and incomplete standard versions. All measurements stated are non-binding. Representations of working load are normed illustrations and are not the optimum boom position in which the maximum lifting power can be achieved.